

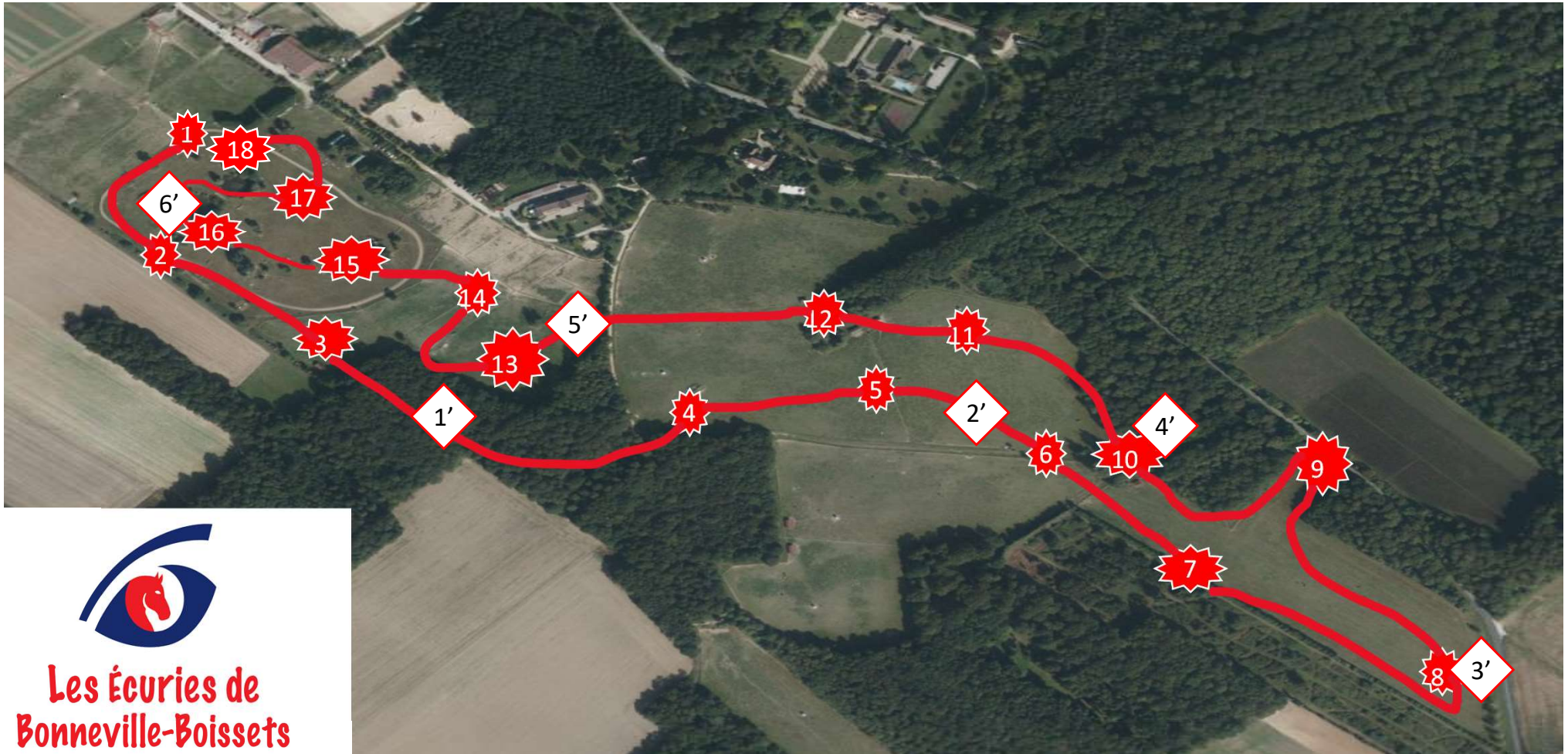


# Amateur Elite / Pro 3

Vitesse 520m/min  
Distance: 3400 m

Tps idéal:

Nbre d'efforts: 26



**Les Écuries de  
Bonneville-Boissets**

- 1- ¼ de rond
- 2- Maison
- 3- table
- 4-Oxer

- 5AB-trackhenen/directionnel
- 6- palissade
- 7-coffre
- 8ABC-les cylindres

- 9-Pointe
- 10-Ponton
- 11-tonneaux
- 12ABC piano/brush

- 13-SPA
- 14-cylindre
- 15AB-Table Mim's/pointe
- 16-mim's
- 17ABC-le gué

- 18-coffre losange