

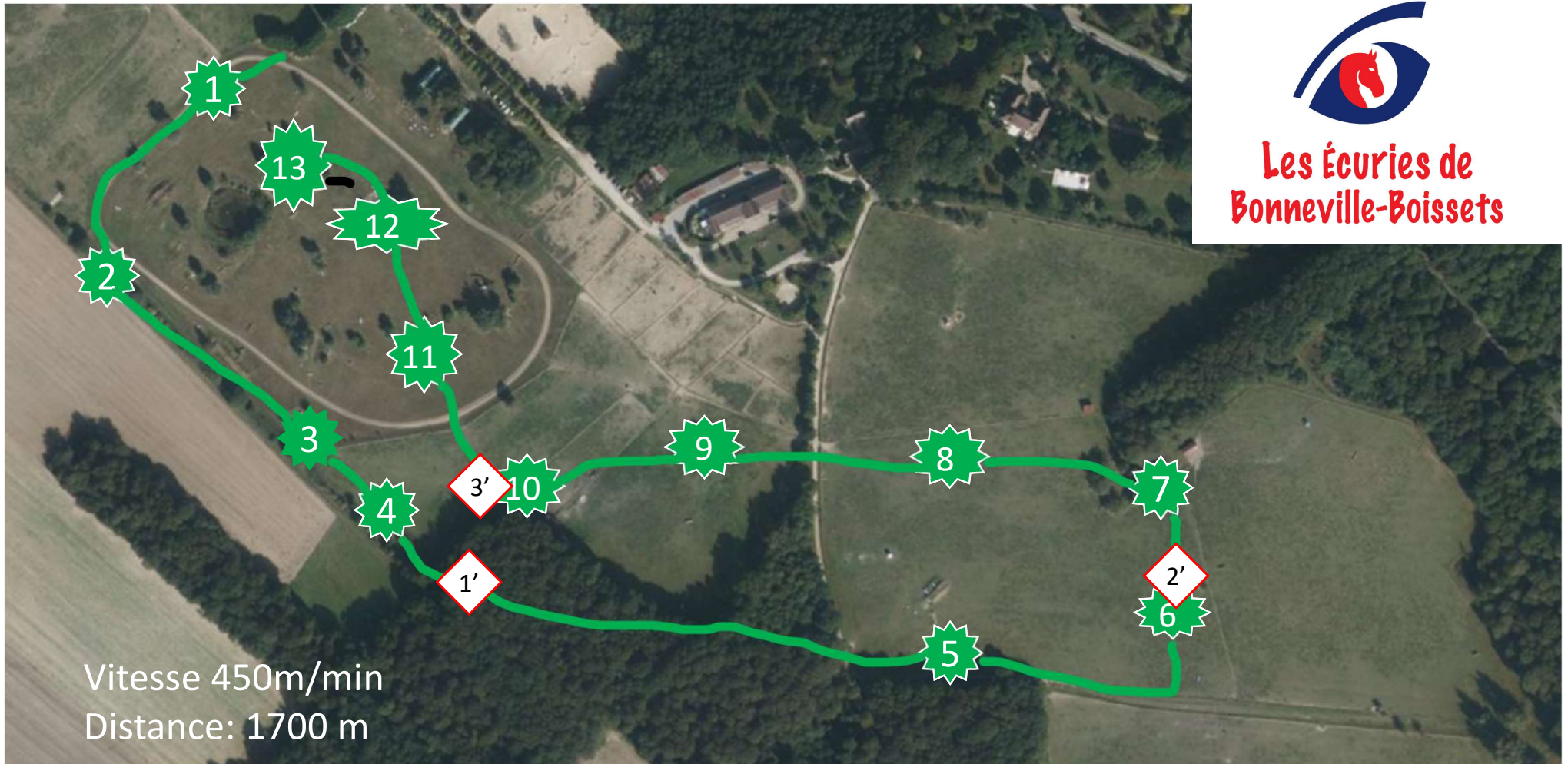


# Amateur 4

Nbre d'efforts: 15



Les Écuries de  
Bonneville-Boissets



Vitesse 450m/min  
Distance: 1700 m

1- tronc

2-tronc

3- Brooke

4- table champignon

5AB-dôme/toit

6-haie

7AB-CB/CH

8- Mim's

9-talus

10- dôme rose

11-ponton

12-vertical Mim's

13- Finish

