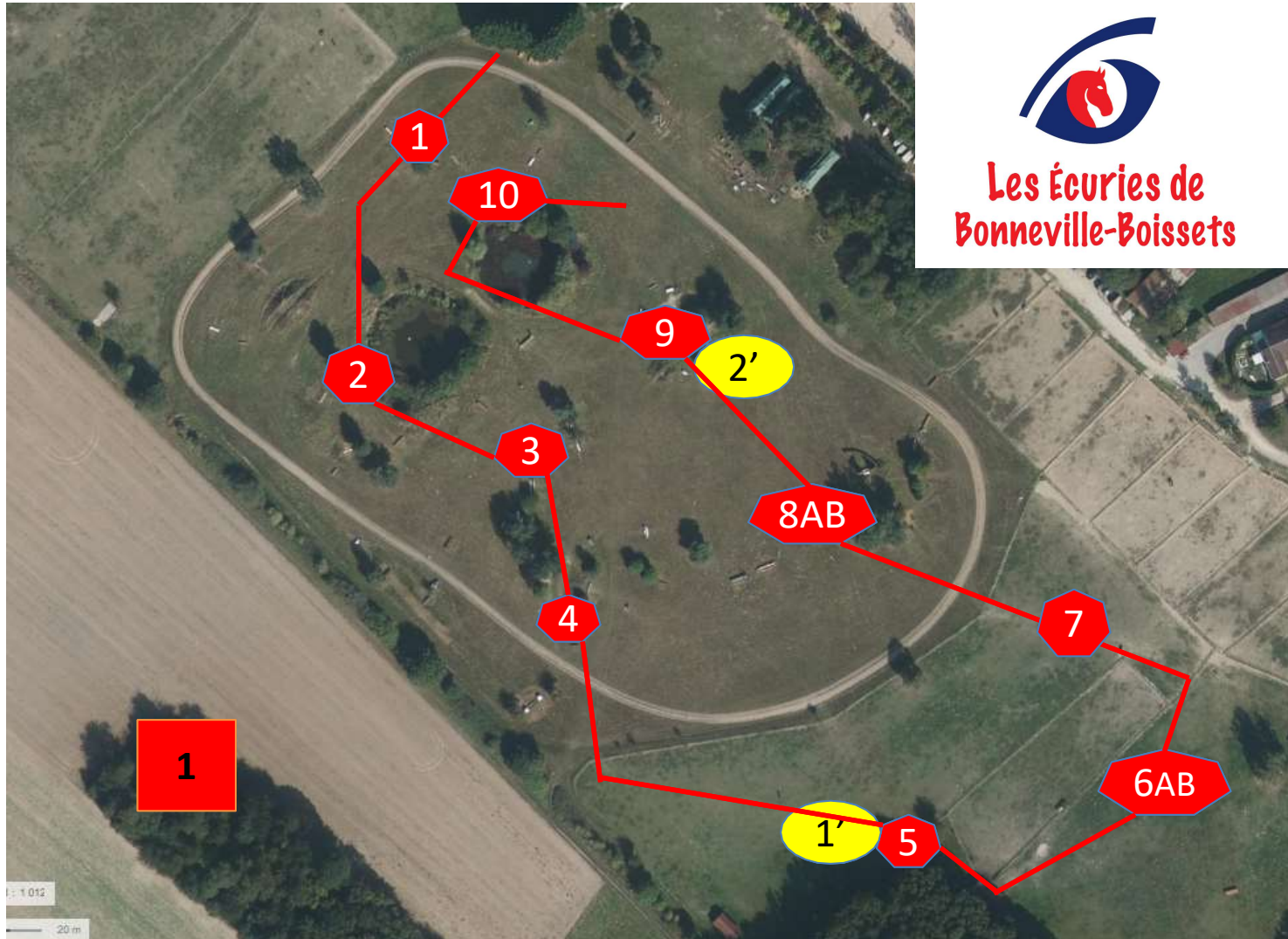


Poney 1/Club 2/Poney E2



- 1- Tronc
- 2- Pyramide jaune
- 3- malle
- 4-Dôme
- 5- Tronc
- 6ab- Palissade - SPA
- 7- Pyramide blanche
- 8ab- pyramide- table
- 9- directionnel bleu
- 10- haie

Distance: 930 m
Vitesse: 380m/min

Tps accorde: 2min12s
Tps idéal: 2min27s
12 efforts