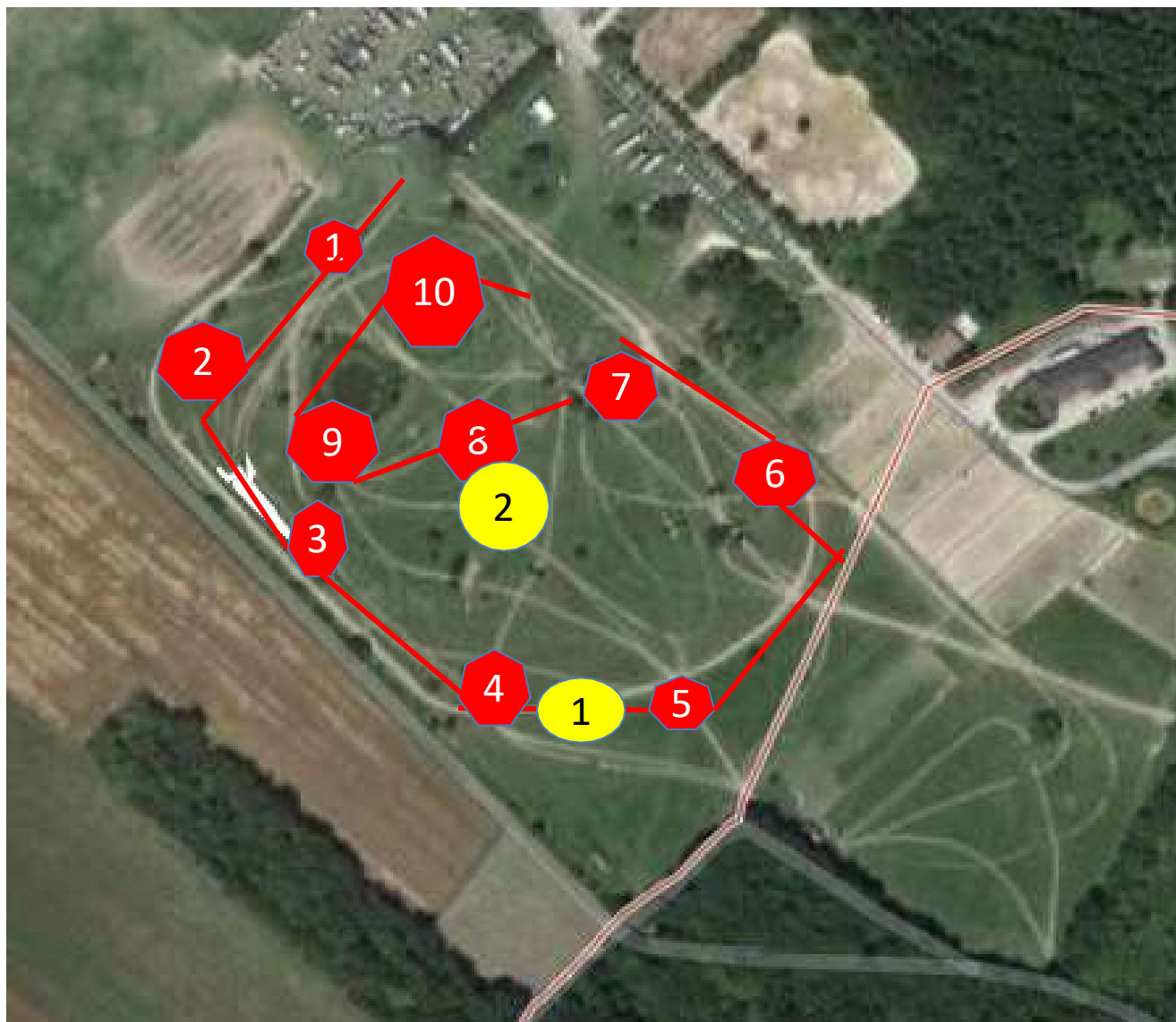


Poney 1/Club 2



- 1-tronc
- 2- palissade
- 3- table champignon
- 4ab-spa/palissade
- 5- spa
- 6- palissade
- 7- malle
- 8ab- trou/palissade
- 9- banc
- 10-le dernier

Distance: 985 m
Vitesse: 380m/min

Tps accorde: 2'35
Tps ideal: 2'20